

Nardi Electric Motor Quick Guide

General parts

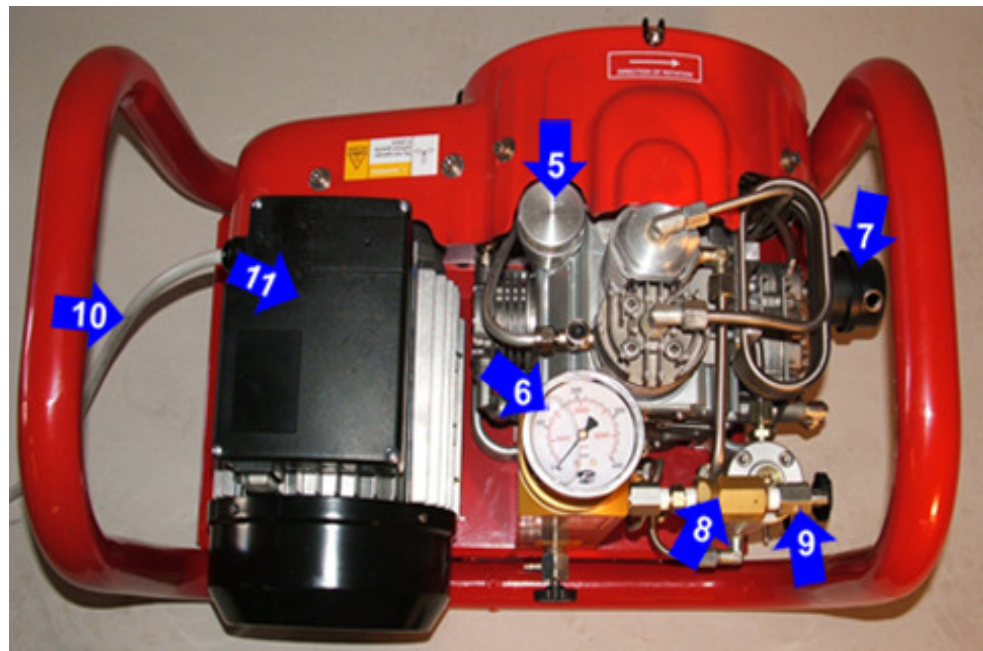
A. Side View



- 1. Manual Drains
- 3. Filter Housing

- 2. Filter Cap
- 4. Motor On/Off Switch

B - Top View



- 5. Oil Fill Cap
- 7. Intake Filter Housing
- 9. JIC Fitting - attach fill hose here
- 11. Electric Motor

- 6. Pressure Gauge
- 8. Back Pressure Regulator
- 10. Power Cord

Nardi Electric Motor Quick Guide

Maintenance Schedule for Compressor (this must be followed or the warranty is void.)

Hours	Description
Every run	Check oil level.
Every 15 minutes	Empty <u>all</u> condensate drains.
5	Change oil!!! This is an important change.
Every 14	Change air filter.*
Every 20	Change oil.
25	Change intake filter & check belt tension.
Every 50	Change intake filter
Yearly	Change oil and filters, even if you do not have the hours.

* Temperature Correction Table: In order to know the estimated number of hours that a filter should last, see the chart below.

Celsius	Fahrenheit	Estimated hours filter should last
50	122	3 hrs.
40	104	5 hrs.
30	86	8 hrs.
20	68	14 hrs.
10	50	26 hrs.
5	41	36 hrs.
0	32	53 hrs.

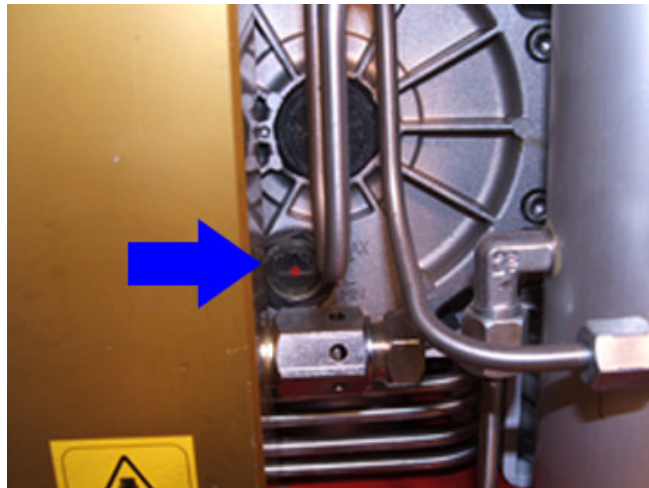
A. Open the condensate drains, at a minimum, after each fill. (See Figure A, Item 1) More often if it is warm and/or humid. It is required that drains be opened prior to each start of the compressor. This will prevent burn out of motor switches.

Nardi Electric Motor Quick Guide

B. Changing the oil

- a. Remove oil fill cap (See Figure B, Item 5) Turn slightly to loosen, and then pry up with screwdriver shaft.
- b. Open oil drain – tilt compressor to locate oil drain under mounting plate on bottom of compressor.
- c. When oil stop running replace drain plug.
- d. Remove baffle from inside oil filler tube.
- e. Refill crankcase with Synthetic Compressor Oil. Do this slowly until oil is level with red dot on sight glass. (See Figure C)
- f. Replace baffle inside oil filler tube with allen screw facing up.
- g. Replace oil fill cap.

Figure C



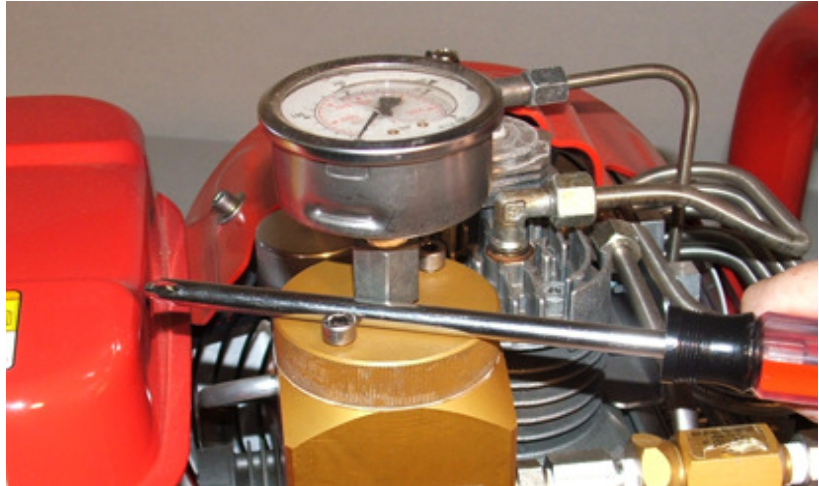
- Achieve the proper oil level. Over filling or under filling can damage unit.

C. Changing purification filter.

- a. Open condensate drains (See Figure A, Item 1)
- b. Remove filter cap (See Figure A, Item 2)
 - Use screwdriver to span between Allen head screw and center bushing and twist to open. (See Figure D)

Nardi Electric Motor Quick Guide

Figure D



- c. Remove filter and replace with new one.
- d. Replace filter cap (See Figure A, Item 2)
 - Use screwdriver to span between Allen head screw and center bushing and twist to close. (See Figure D)

D. Changing intake filter (See Figure B, Item 7)

- a. Twist off cap
- b. Remove and replace filter
- c. Replace cap

This guide does not replace your need to read and follow instructions in the owner's manual. Please read and follow all safety instructions.