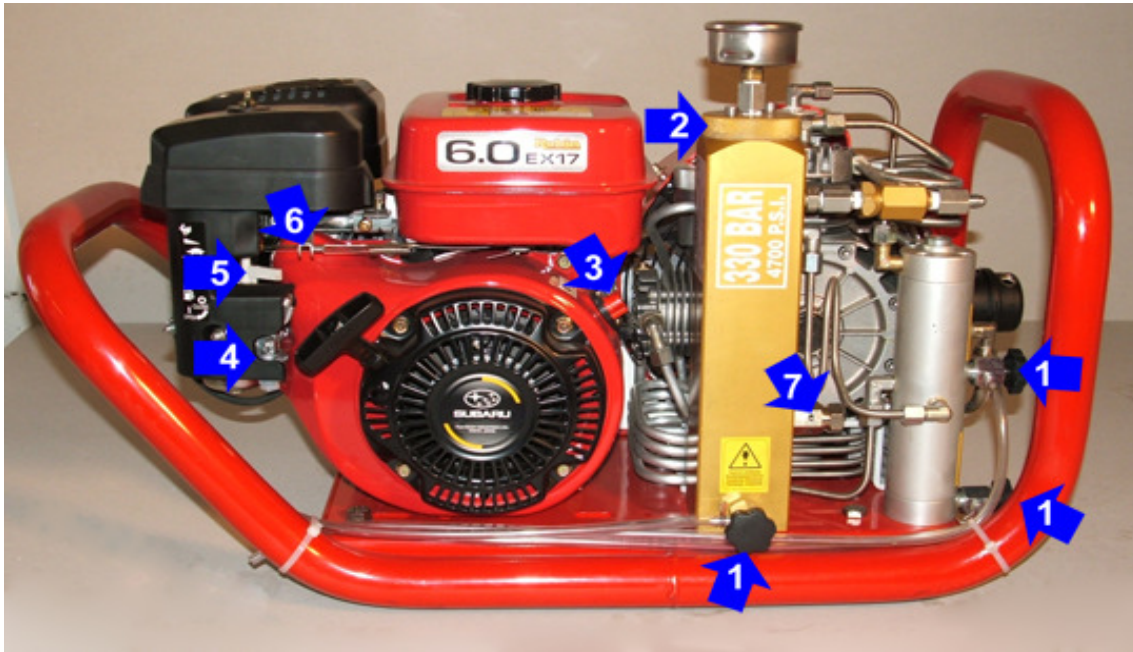


Nardi Gas Engine Quick Guide

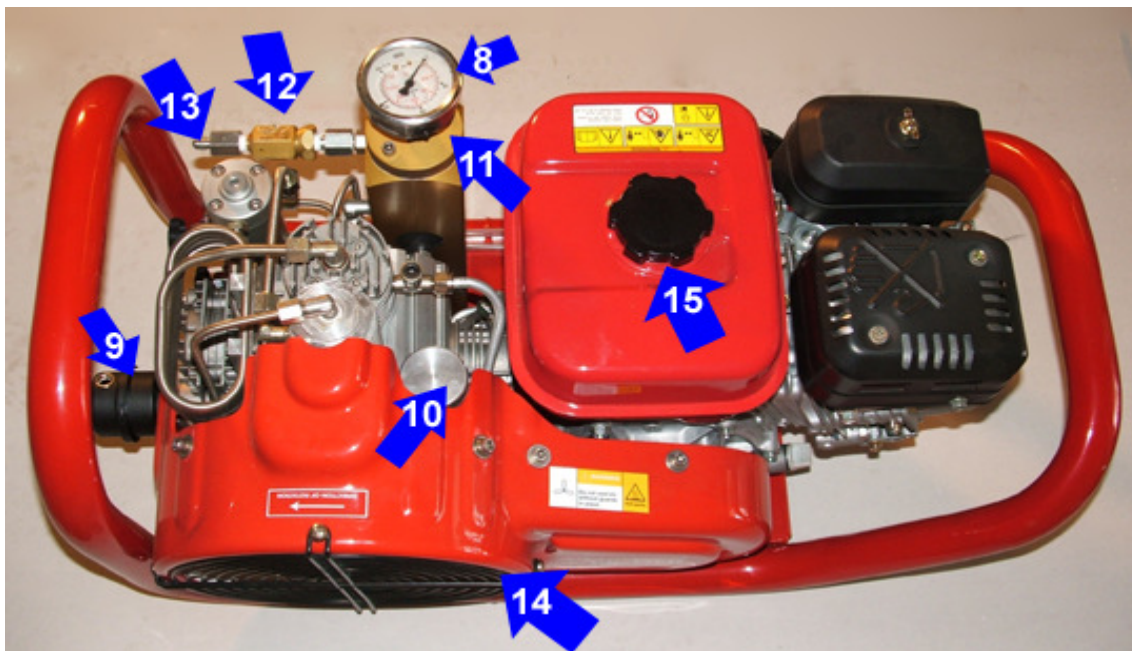
General parts

A. Side View



- | | |
|-------------------------------|------------------------------|
| 1. Manual Drains | 2. Filter Cap |
| 3. On/Off Switch | 4. Engine Fuel On/Off Switch |
| 5. Choke | 6. Engine Speed Control |
| 7. High Pressure Relief Valve | |

B. Top View



- | | |
|-----------------------------|---|
| 8. Pressure Gauge | 9. Intake Filter Housing |
| 10. Oil Fill Cap | 11. Filter Housing |
| 12. Back Pressure Regulator | 13. JIC Fitting – attach fill hose here |

Nardi Gas Engine Quick Guide

Maintenance Schedule for Compressor (this must be followed or the warranty is void.)

Hours	Description
Every run	Check oil level(s).
Every 15 minutes	Empty <u>all</u> condensate drains.
5	Change oil!!! This is an important change.
Every 14	Change air filter.*
Every 20	Change oil.
25	Change intake filter & check belt tension.
Every 50	Change intake filter
Yearly	Change oil and filters, even if you do not have the hours.

* Temperature Correction Table: In order to know the estimated number of hours that a filter should last, see the chart below.

Celsius	Fahrenheit	Estimated hours filter should last
50	122	3 hrs.
40	104	5 hrs.
30	86	8 hrs.
20	68	14 hrs.
10	50	26 hrs.
5	41	36 hrs.
0	32	53 hrs.

A. Open the condensate drains, at a minimum, after each fill. More often if it is warm and/or humid. Assure condensate drains are open when starting compressor. (See Figure A, Item 1)

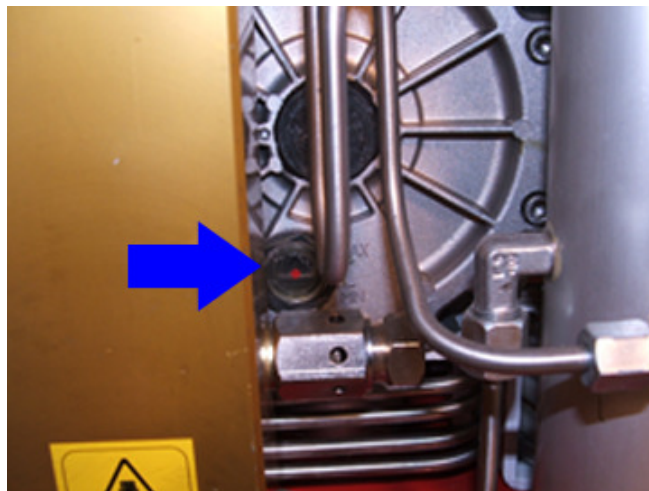
B. Changing the oil

- a. Remove oil fill cap (See Figure B, Item 10) Turn slightly to loosen, and then pry up with screwdriver shaft.

Nardi Gas Engine Quick Guide

- b. Open oil drain – tilt compressor to locate oil drain under mounting plate on bottom of compressor.
- c. When oil stop running replace drain plug.
- d. Remove baffle from inside oil filler tube.
- e. Refill crankcase with Synthetic Compressor Oil. Do this slowly until oil is level with red dot on sight glass. (See Figure C)
- f. Replace baffle inside oil filler tube with allen screw facing up.
- g. Replace oil fill cap.

Figure C



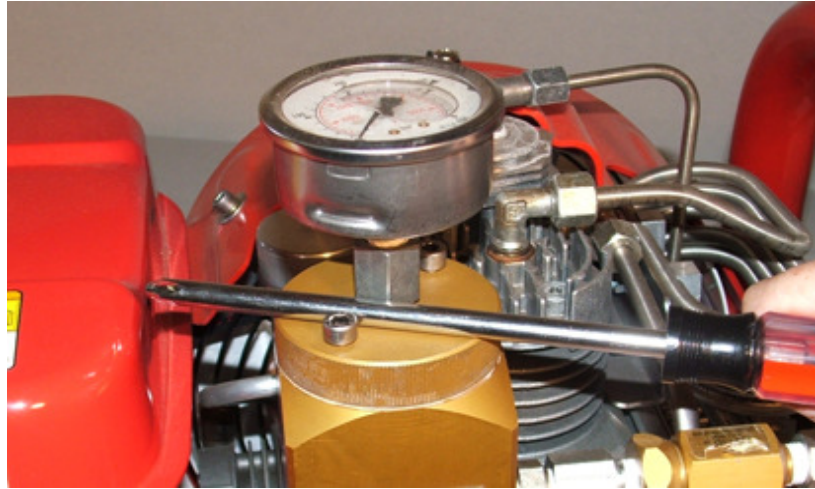
- Achieve the proper oil level. Over filling or under filling can damage unit.

C. Changing purification filter.

- a. Open condensate drains (See Figure A, Item 1)
- b. Remove filter cap (See Figure A, Item 2)
 - Use screwdriver to span between Allen head screw and center bushing and twist to open. (See Figure D)

Nardi Gas Engine Quick Guide

Figure D



- c. Remove filter and replace with new one.
- d. Replace filter cap (See Figure A, Item 2)
 - Use screwdriver to span between Allen head screw and center bushing and twist to close. (See Figure D)

D. Changing intake filter (See Figure B, Item 9)

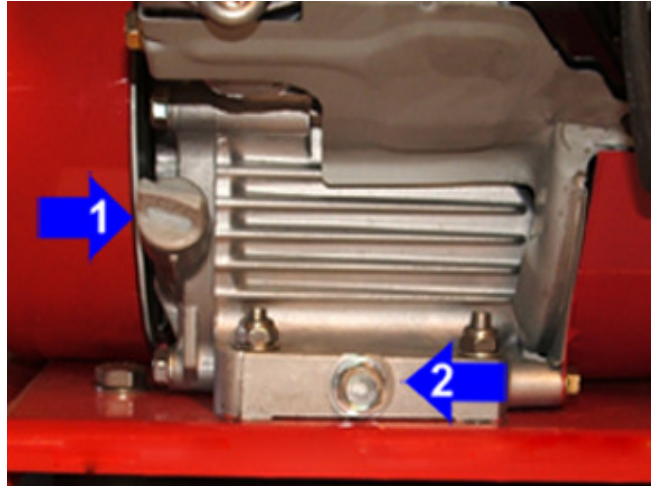
- a. Twist off cap
- b. Remove and replace filter
- c. Replace cap

E. Engine Oil

- a. Check engine oil each day of operation
- b. Change after the first 20 hours of operation
- c. Then change every 100 hours or once a year thereafter.

Nardi Gas Engine Quick Guide

Figure E



1. Dip stick and oil filler cap
2. Oil drain plug

F. Starting.

- a. Open the condensate drains (this takes the pressure off of the compressor for much easier starting. (See Figure A, Item 1)
- b. For cold starting, close the choke
- c. Gasoline open
- d. Throttle open
- e. Turn engine on
- f. Pull starter cord
- g. Once started, open the choke and close condensate drains.

This guide does not replace your need to read and follow instructions in the owner's manual. Please read and follow all safety instructions.